

Voice of the Amazon

1. The Voice of the Amazon

Snare Drum

Composed by Rob Stein
Percussion by Nathan Langford

A $\text{♩} = 80$ $\frac{1-2}{2}$ $\frac{3-7}{5}$ $\text{♩} = 160$ edge to center

B $\frac{12-14}{3}$

15 rim *mp* *f* R L R L

19 *f* *p* *f* *mp* *f* *p* *f* *f* *p* *f* *mp* *f* *p* *f* R L R L R B

23 *f* *p* *f* *p* *f* *f* *p* *f* B B B

C

31 *f* *mp* *f* *p* *f* *mp* *f* *p*

The score is written on a single staff with a snare drum icon at the beginning. It consists of several measures of music. Section A starts with a tempo of 80 and a 2/4 time signature, followed by a 5/8 time signature. Section B has a tempo of 160 and a 3/8 time signature. The score includes various dynamics such as *f* (forte), *p* (piano), *mp* (mezzo-piano), and *rim* (rim shot). It also includes articulation marks like accents and slurs. The notation includes notes, rests, and specific drum techniques like rim shots and edge-to-center strokes.

Snare Drum

35

f *p* *f* *p* *f*

40

p *f* *f* *p* *f*

D $\text{♩} = 168$
Opt. ribbon crashers or sticks on shell

48-51

mp

E

52-55

p

57

f *p*

61

edge to center

p *f* *p*

F

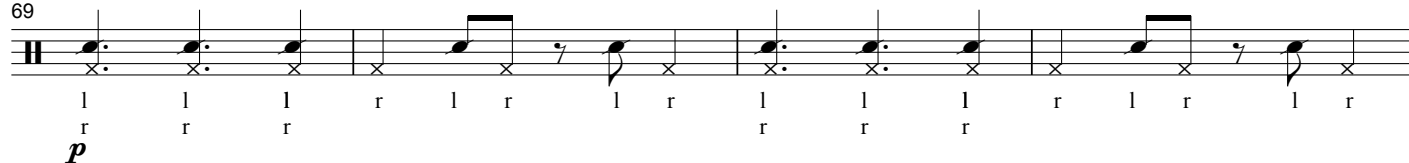
66-68

f

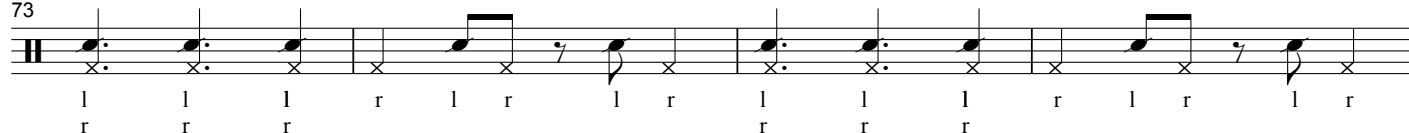
Snare Drum

side of drum (r)
cross stick (l)

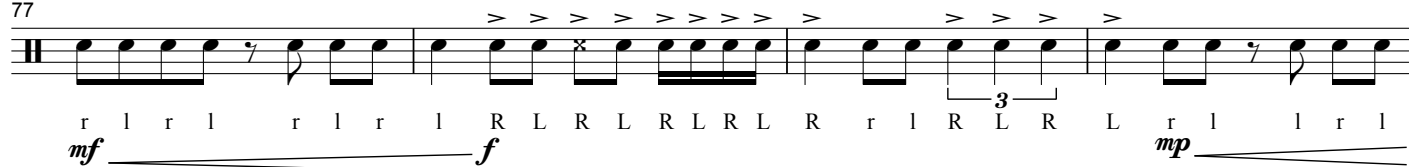
69



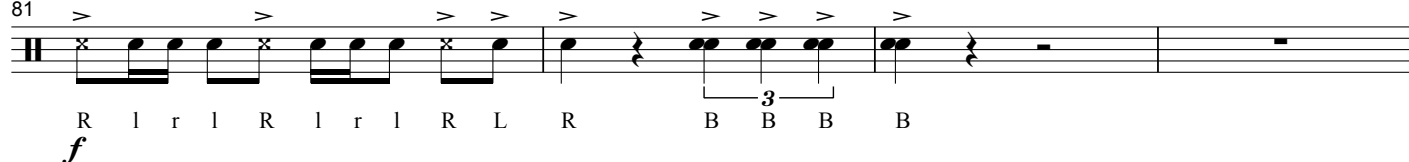
73



77



81



G

85-96
12

H

97-103
7



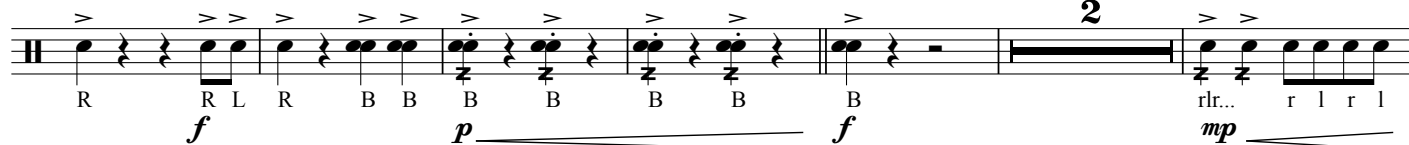
I



109

J

114–115
2



Snare Drum

K

The musical score for 'The Rose Tree' is written on a single staff with a treble clef. The melody consists of eighth and sixteenth notes, with rests. The lyrics are written below the staff, aligned with the notes. The piece is divided into measures by vertical bar lines, and the time signature changes from 3/4 to 4/4 and back to 3/4. The dynamics *f* and *mp* are indicated below the staff.

f *mp*

123

129

[illegible]

L

Musical notation for the first system of "The Merry Men's Dance". The notation is on a single staff with a treble clef, a key signature of one sharp (F#), and a 3/4 time signature. The melody consists of eighth and sixteenth notes, with some notes marked with accents (>) and others with 'x'. The rhythm is indicated by 'R' for right foot and 'l' for left foot. The notation includes a repeat sign and a final double bar line.

139

[illegible]